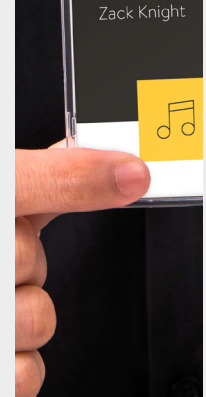
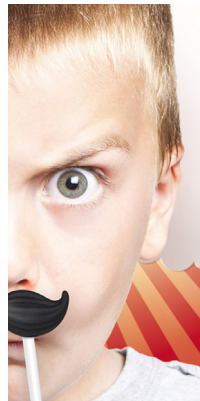


GERAINT
CONNORS

PORT- FOLIO



**HELLO, MY NAME IS GERAINT.
PRONOUNCED 'GEH...RRR...AINT'(LIKE PINT).
BUT YOU CAN CALL ME**

G

WORLD OF FLAVOURS

- 1 IDENTITY
- 2 CONCEPT / BRANDING
- 3 PACKAGING DESIGN / ARTWORK

INDUSTRIAL KITCHEN

- 4 IDENTITY
- 5 CONCEPT / BRANDING
- 7 PACKAGING DESIGN / ARTWORK

COLOURWORKS

- 8 IDENTITY REBRAND
- 9 CONCEPT
- 10 PACKAGING DESIGN / ARTWORK
- 11 TRADE SHOW POS
- 12 SOCIAL MEDIA CONCEPT
- 13 WEBSITE

GTECH

- 14 WOODPECKER TECHNOLOGY LOGO
- 16 HEATWAVE LOGO
- 19 SALE PRESS AD CONCEPT / DESIGN
- 21 INTERNATIONAL TERRITORIES LOGO
- 23 ABOUT US PAGE CONCEPT / DESIGN

KITCHENCRAFT

- 25 REBRAND / CONCEPT
- 27 STATIONERY / OPEN DAY INVITES
- 29 NAME BADGES
- 30 SIGNAGE

FRED CAMPAIGN

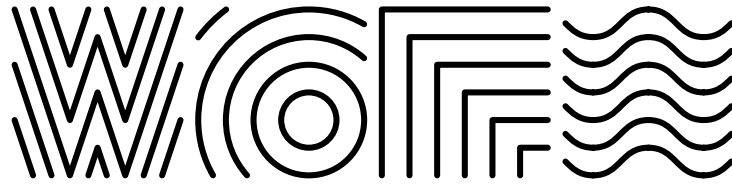
- 31 NEVER STOP PLAYING
- 32 CAMPAIGN CONCEPT / DESIGN
- 33 INVITE CONCEPT / DESIGN
- 34 QUARTER PAGE ADVERTS / DESIGN
- 35 CATALOGUE CONCEPT / DESIGN

- 37 CONTACT



WORLD OF FLAVOURS
IDENTITY

FOUR INGREDIENTS (ELEMENTS) OF THE EARTH

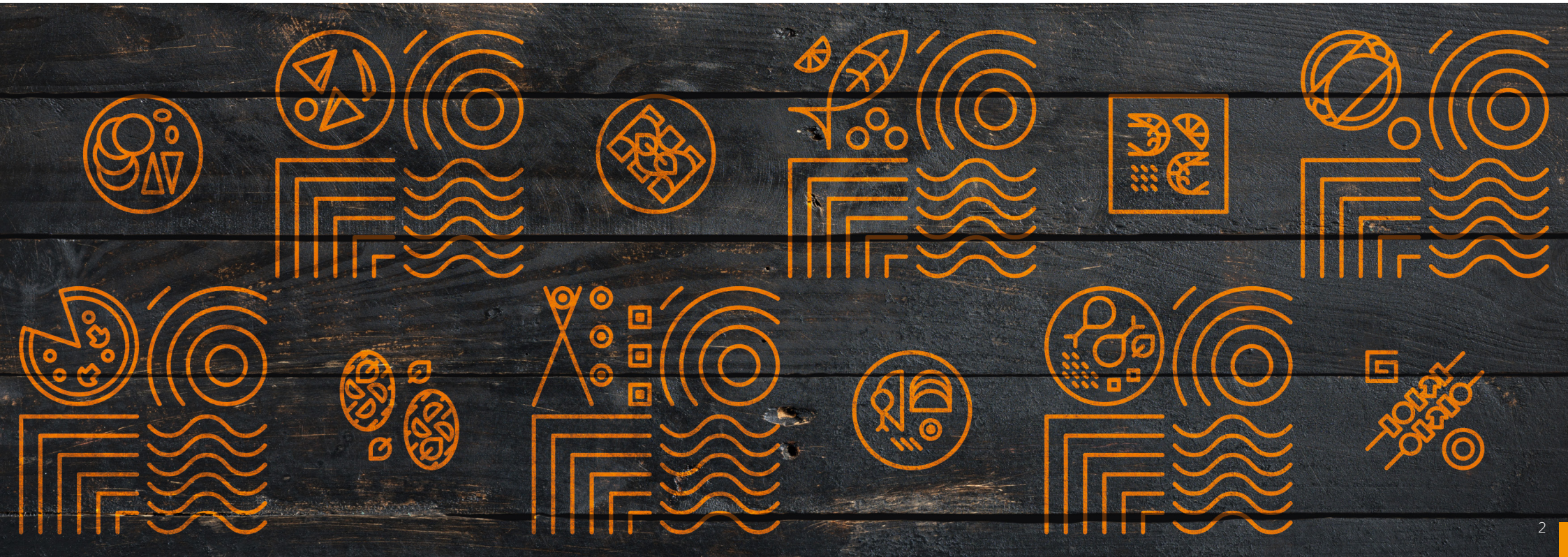


FIRE

AIR

EARTH

WATER



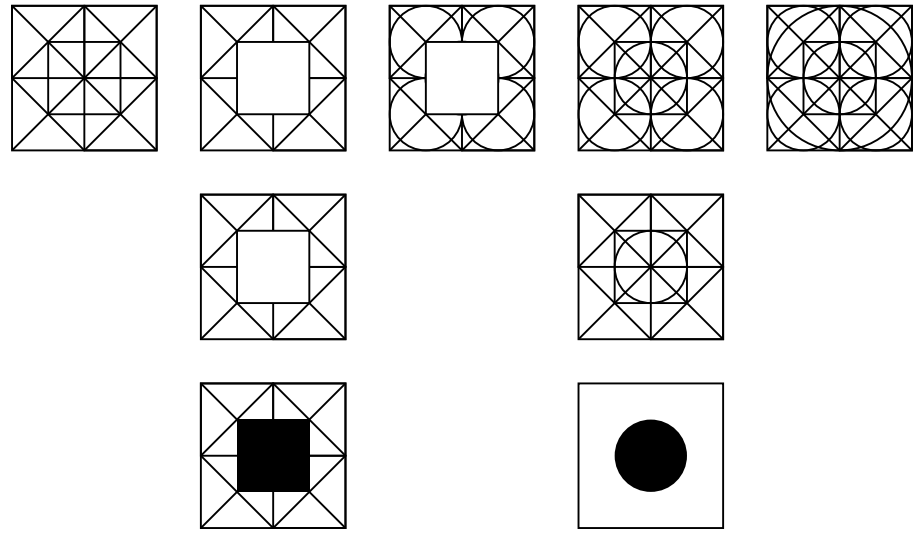


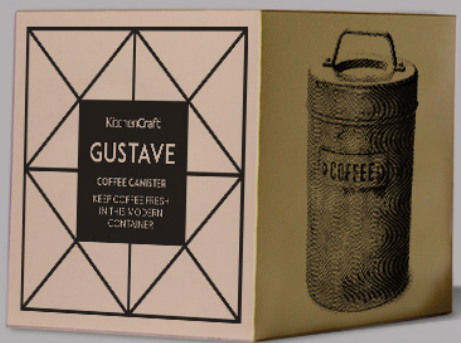
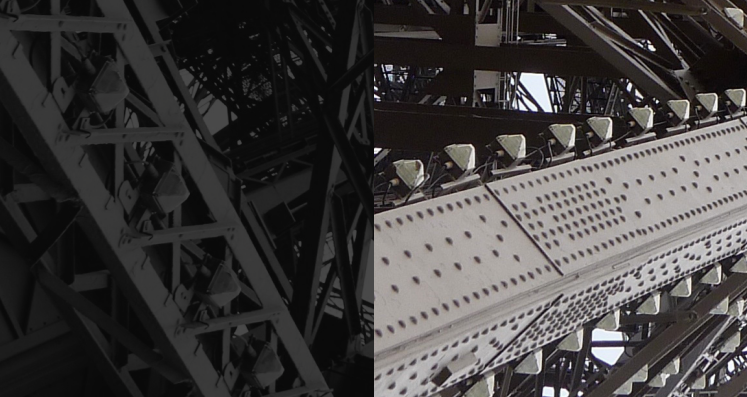
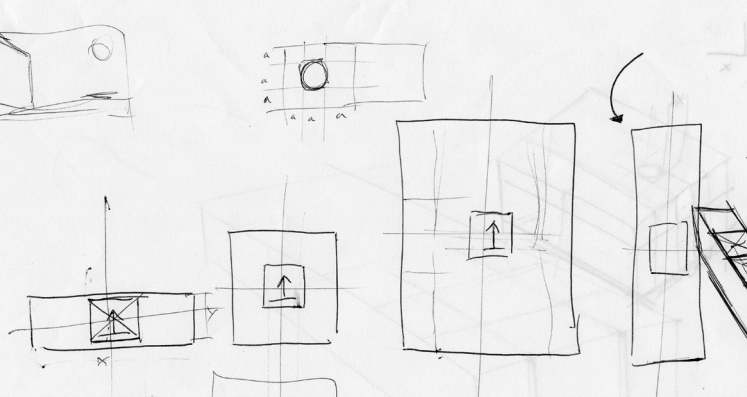
PACKAGING DESIGN / ARTWORK





INDUSTRIAL KITCHEN
IDENTITY





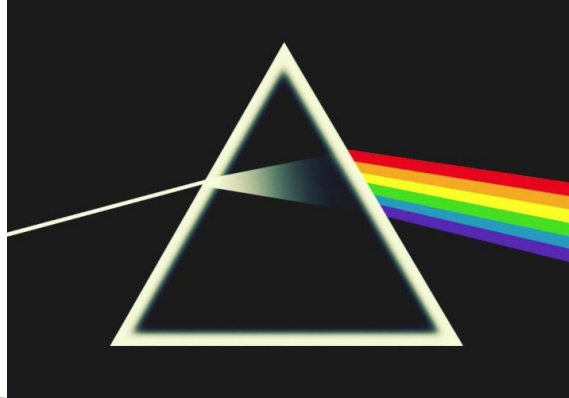
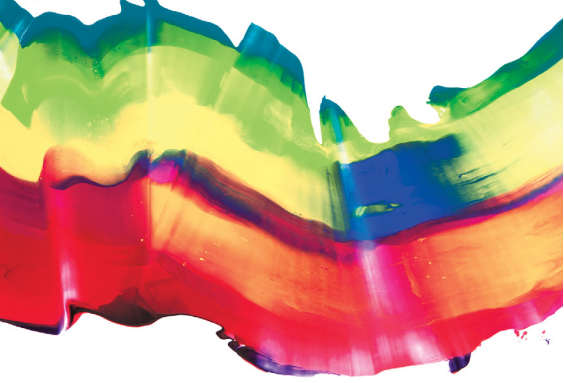


PACKAGING DESIGN / ARTWORK

colourworks



COLOUR
WORKS



**COLOUR
WORKS**



Who Said Good Things Don't Come Easily?



This 4 in 1 bottle jar opener features an easy grip twist opener for even the toughest of lids.



colourworks.co.uk

#mycolourworks

Have I Got A Scoop For You...

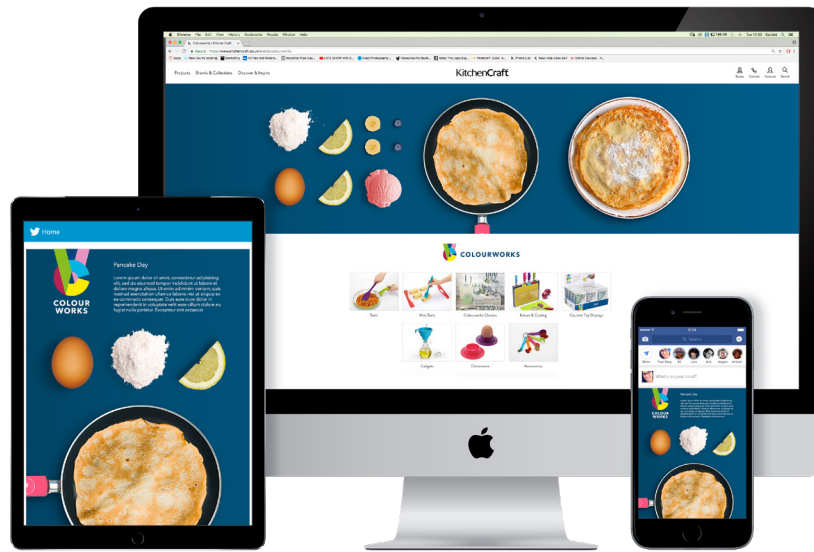


Featuring a non slip handle for a comfortable and secure grip, easily scoop and serve ice cream for friends and family.

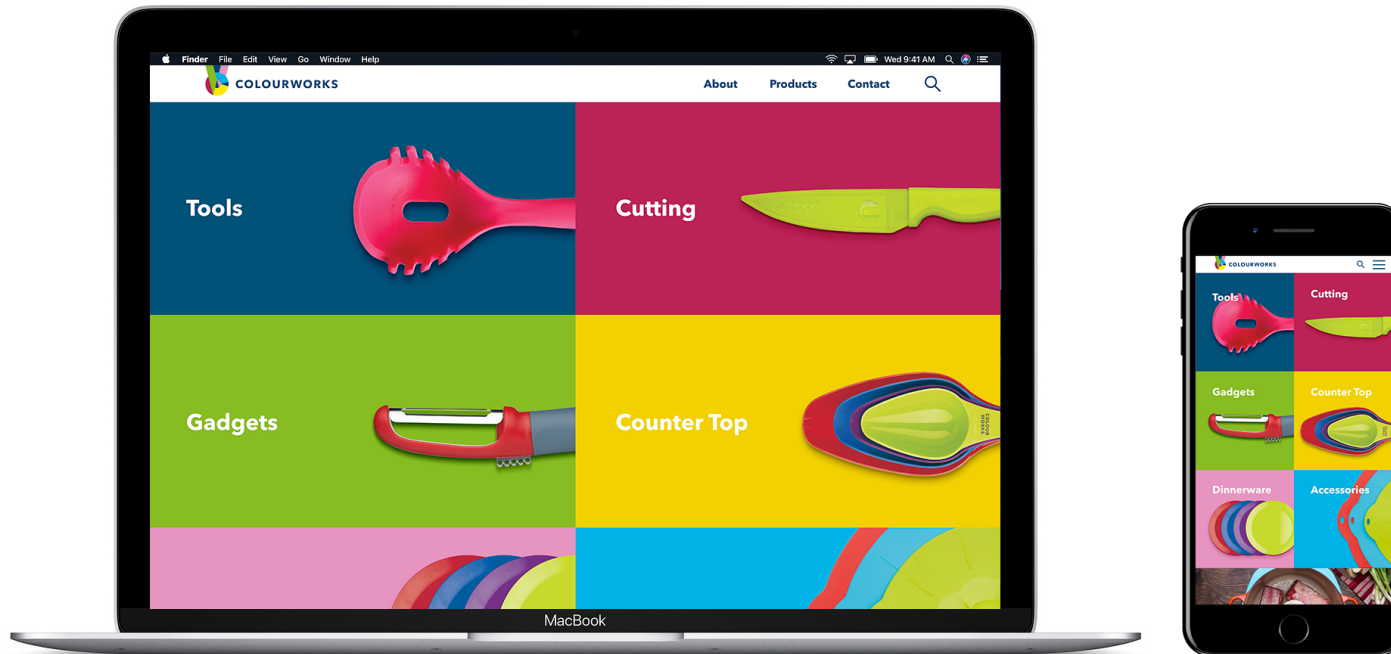


colourworks.co.uk

#mycolourworks

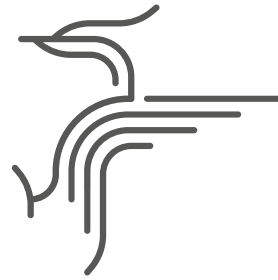


COLOURWORKS SOCIAL MEDIA CONCEPT



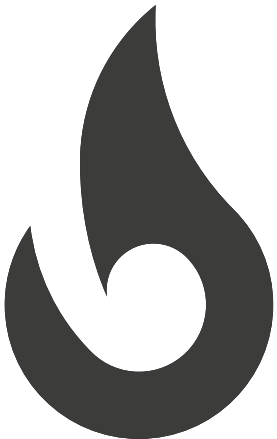
COLOURWORKS WEBSITE CONCEPT





Woodpecker
TECHNOLOGY

Woodpecker



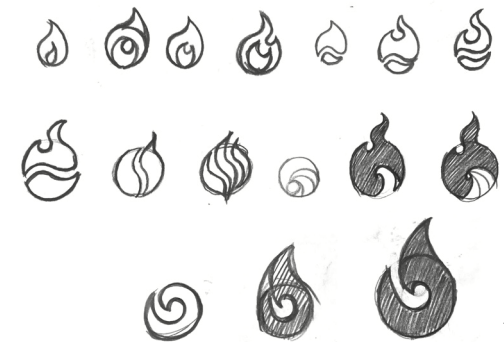
HEATWAVE

HEATWAVE

Heatwav

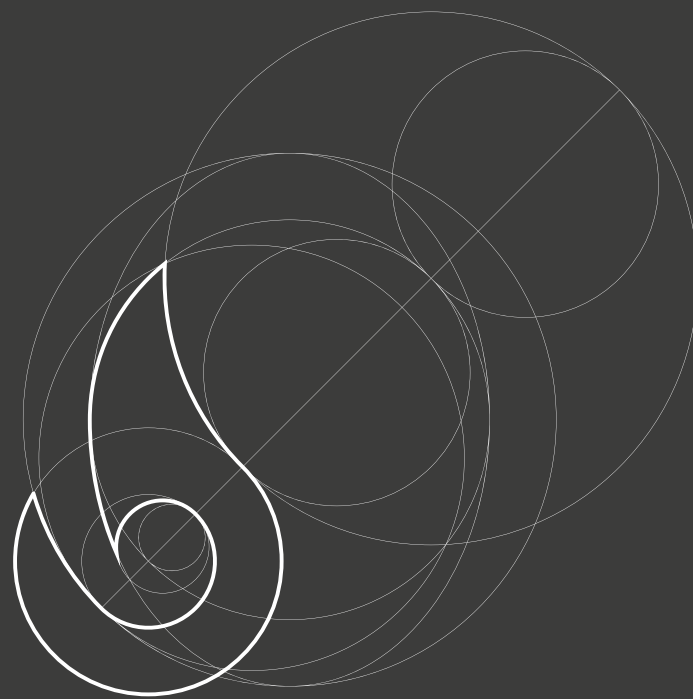


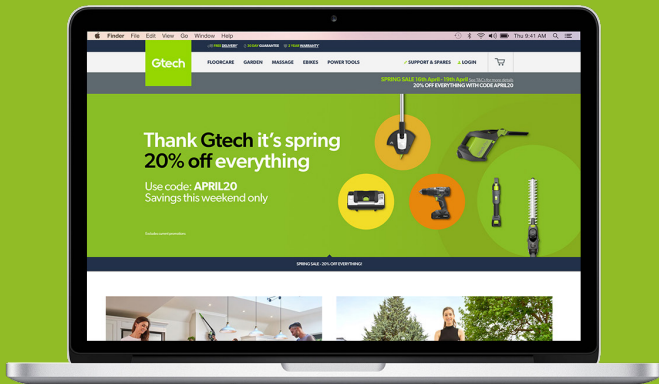
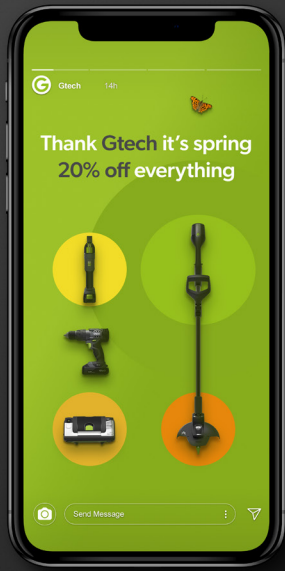
GTECH HEATWAVE LOGO





HEATWAVE LOGO





GTECH 20% SALE PRESS AD CAMPAIGN CONCEPT

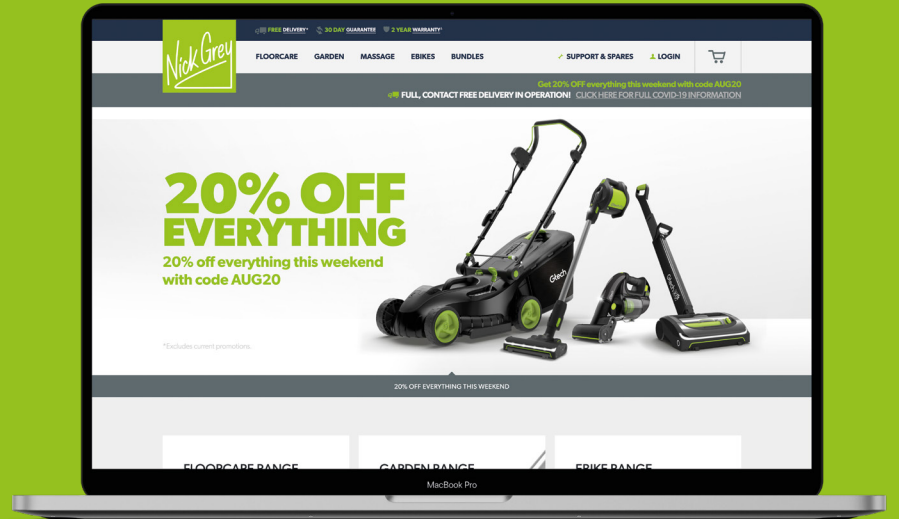


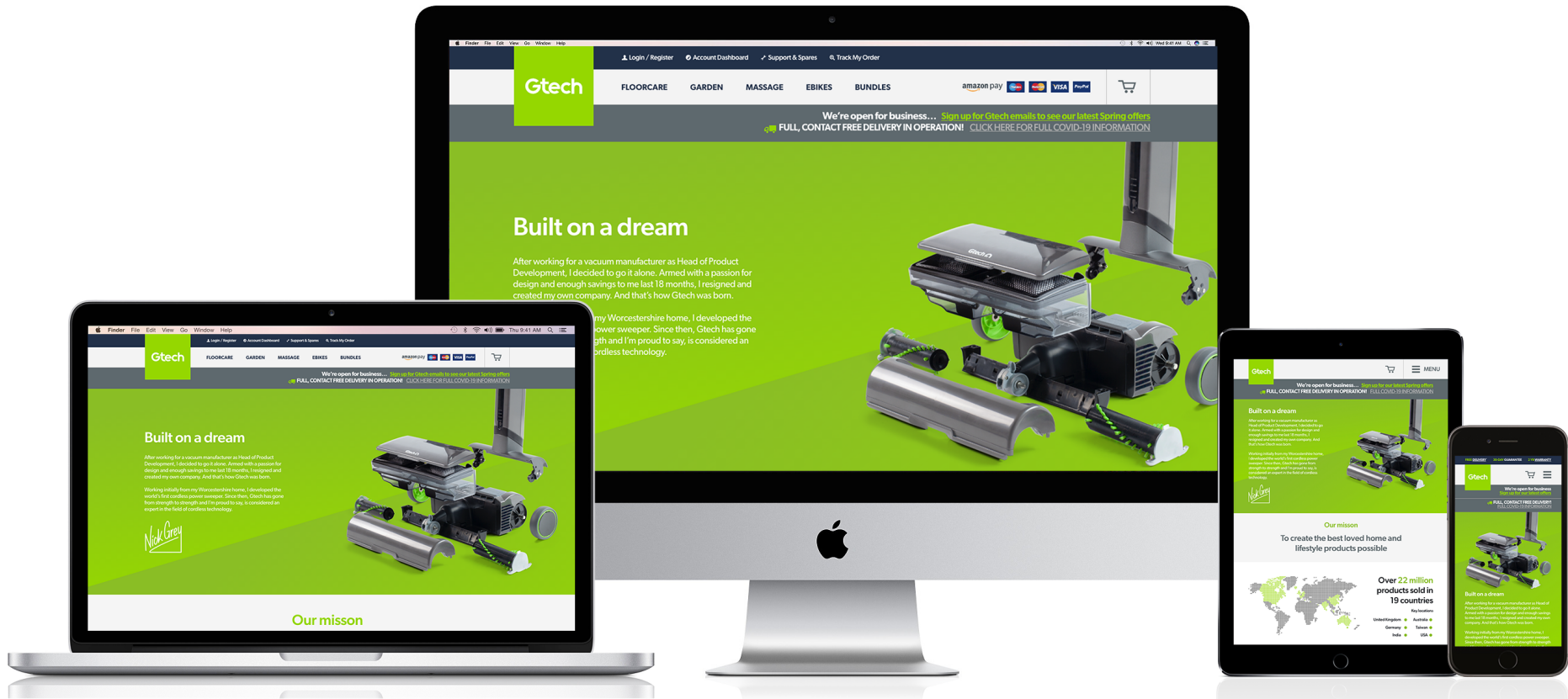
Nick

Nick Grey



GTECH INTERNATIONAL TERRITORIES LOGO CONCEPT





GTECH ABOUT US PAGE CONCEPT / DESIGN

KitchenCraft®
EST. 1850











KitchenCraft
EST. 1850
a LifetimeBrands company



KitchenCraft®

EST. 1850

a LifetimeBrands company



KitchenCraft
EST. 1850

Welcome

- ← Reception
- ← Visitor parking
- ← Employee parking
- Goods inwards →
- Collection bay →

International Headquarters for
LifetimeBrands
kitchencraft.co.uk

Fred

Never Stop PLAYING





Fred
Never
Stop
PLAYING

INVITE CONCEPT / DESIGN





Kids

- 14. Yummy in my tummy - mini eggs & biscuits
- 18. Table manners - mini eggs & biscuits
- 20. Eggs - crazy fried eggs - mini eggs & biscuits
- 23. Fun treats - samosa board (see page 14)
- 24. Cookies nom nom! - best cookie cutters
- 26. Babies - bibs, dumplings & rattle

Party

- 30. Let's get the party started - bottle openers & more
- 32. Cocktails - recipe glasses, mixers & extra fun
- 34. Stay cool - ice cubes that are so cool you'll freeze
- 36. Break the ice - conversation starting cups & coasters
- 38. That's my drink - clammy your drinks
- 40. Fancy a nibble? - serving ideas & cheese boards
- 42. Stick a cork in it - fun bottle openers
- 44. Takeaway - take the party where ever you go

Fred's



MUFFINTOPS™
with just a little
bit extra



but first!
Tea!



**THANK
YOU**

geraintconnors@hotmail.co.uk
07711 990660